



26 Northbrook Street, Birmingham, B16 0BB

£220,000

Hadleigh Estate Agents are delighted to offer this fantastic two bedroom terraced house for sale. Conveniently located for easy access into Birmingham City Centre, offering excellent transport links and being within walking distance to local amenities.

In brief the property comprises fore garden and rear garden. Entrance porch and hallway lead through to a spacious kitchen diner and lounge to the rear. Upstairs has two double bedrooms, bathroom with adjacent W.C.

Entrance Porch/ Hallway

UPVC double glazed porch with internal storage cupboards. Hallway benefitting from further internal cupboards, carpeted flooring, central heating radiator and ceiling light point.

Kitchen Diner



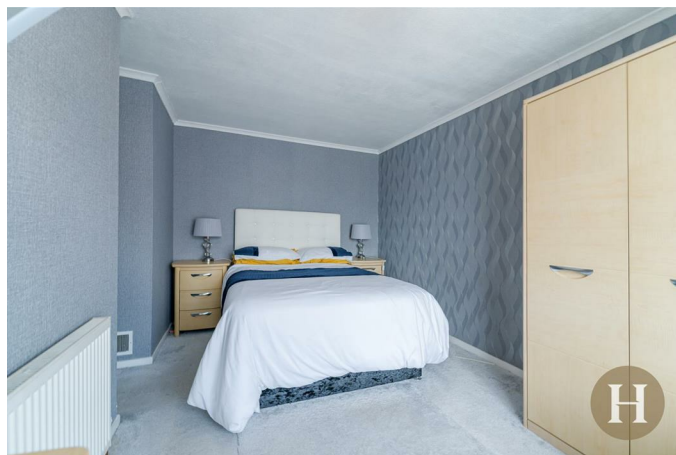
Spacious kitchen with a range of base and wall units, integrated oven and extractor hood over. Plumbing for utilities and ample space for dining table. Two ceiling light points and window to front elevation.

Lounge



Spacious lounge boasting windows to rear elevation and French doors leading to garden. Central heating radiator, ceiling light points and carpeted flooring.

Master Bedroom



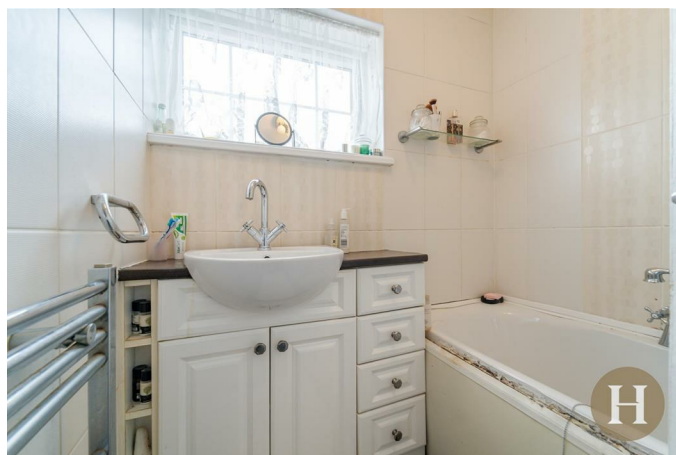
Spacious bedroom with windows to front elevation, carpeted flooring, central heating radiator and ceiling light point.

Bedroom Two



Spacious double bedroom with integral cupboard and window to rear elevation. Ceiling light point and central heating radiator.

Bathroom



Tiled walls, obscure glazed window to front elevation and vanity unit. Mains shower over bath, towel radiator and ceiling light point.

WC



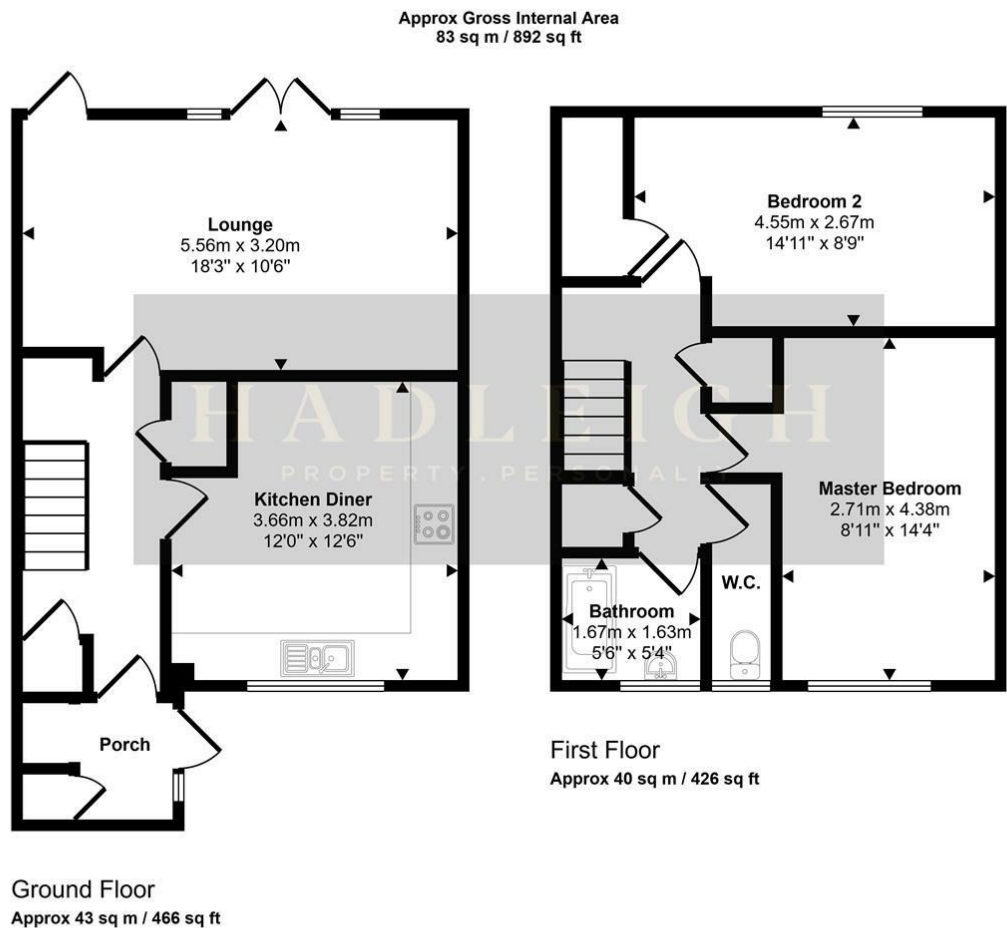
Low level flush WC, with combi storage unit. Obscure glazed window to front elevation, tiled walls and ceiling light point.

Garden



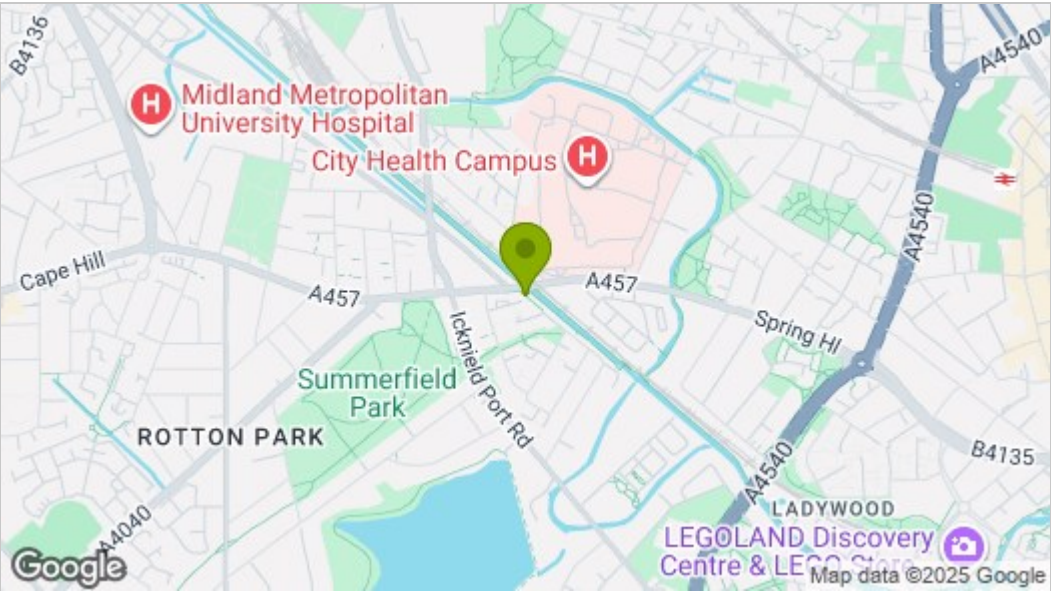
Rear garden predominantly laid to lawn.

Floor Plan



This floorplan is only for illustrative purposes and is not to scale. Measurements of rooms, doors, windows, and any items are approximate and no responsibility is taken for any error, omission or mis-statement. Icons of items such as bathroom suites are representations only and may not look like the real items. Made with Made Snappy 360.

Area Map



These particulars, whilst believed to be accurate are set out as a general outline only for guidance and do not constitute any part of an offer or contract. Intending purchasers should not rely on them as statements of representation of fact, but must satisfy themselves by inspection or otherwise as to their accuracy. No person in this firms employment has the authority to make or give any representation or warranty in respect of the property.

Energy Efficiency Graph

